

**Job Name:** \_\_\_\_\_

**Location:** \_\_\_\_\_

**Purchaser:** \_\_\_\_\_

**Engineer:** \_\_\_\_\_

**Submitted To:** \_\_\_\_\_

**For:**  Reference  Approval  Construction

**Submitted By:** \_\_\_\_\_

**Date:** \_\_\_\_\_

**Unit Designation:** \_\_\_\_\_

**Cooling Performance:**

Nominal Capacity	49,600 Btu/h
Nominal Sensible Capacity	39,500 Btu/h
EWT Range	40-50°F (5-10°C)
Nominal Flow Rate	10.0 GPM
Nominal Pressure drop	7.9 Ft/Hd

**Heating Performance:**

Nominal Capacity	57,000 Btu/h
EWT Range	100-125°F (38-52°C)
Nominal Flow Rate	10.0 GPM
Nominal Pressure drop	7.9 Ft/Hd

**Notes:**

- Cooling Capacity is based on 50°F Entering Water Temp and 80°F DB/67°F WB Entering Air Conditions.
- Heating Capacity is based on 110°F Entering Water Temp and 70°F DB Entering Air Conditions.
- Refer to detailed capacity tables for further information pertaining to the entire entering water temperature range and for flow rates and pressure drop.

**Airflow Rate:**

Nominal CFM	1825 CFM
Total External Static Pressure	Std: 0.3" WG / Max: 0.5" WG
Blower Speed setting	"A" FACTORY SETTING
Motor rating	1 HP
Airflow arrangement	<input type="checkbox"/> Up-flow, <input type="checkbox"/> Horz. Left, <input type="checkbox"/> Horz. Right (Possible)

**Electrical Data:**

Power supply	208-230V / 1PH / 60Hz
Min. Circuit Amps (MCA)	9 AMP
Max. overcurrent protection (MOP)	15 AMP
Electrical Heater Options	<input type="checkbox"/> 15kW <input type="checkbox"/> 20kW <input type="checkbox"/> 25kW

**Electrical Heat Integral Disconnect:**

- Electrical Data for Fan Motor only.
- Factory installed service switch over 10kW (No disconnect).
- See Guide specifications for electrical data for units with factory mounted electric heat.

**Physical Data:**

Dimension (H x W x D)	48"x21-1/4"x28"
Weight	290 lbs
insulation type / R-Rating	1/2"JM TUF-SKIN
Installation Clearances: U.L. Listed for installation with Zero inches Clearance to Combustible materials	

**Connection type**

Inlet / Outlet Connections	1"(Nominal)
Connection Type	Sweat
Drain Connections	3/4"(M) NPT

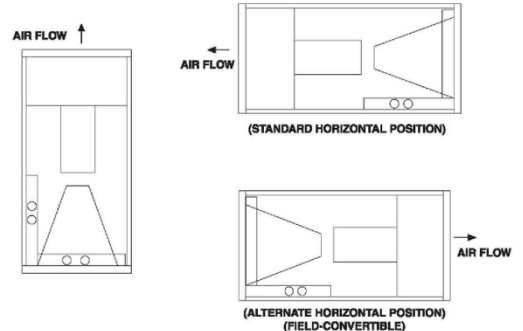
**Feature:**

Air Filter (MERV 8 Throwaway)	20"x25"x1"
-------------------------------	------------

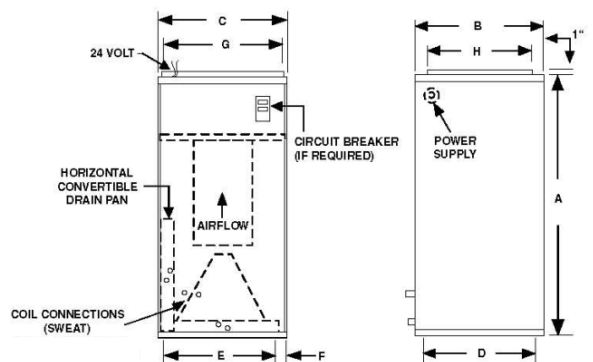


**Airflow arrangement**

**3-WAY AIRFLOW**



**Physical Dimensions**



A	B	C	D	E	F	G	H	FILTER SIZE
48	28	21-1/4	26-1/4	17-1/4	2	19-1/4	18	20x25x1